

BOARD OF TRUSTEES

Agenda

- ‡ +LJKHU (GXFDWLRQ 7RGD\¶V (QYLURQPHQW
- ‡ 6WDWH RI 1HZ -HUVH\ %XGJHW
- ‡ 5DPDSR &ROOHJH
 - ‡ +LVWRULFDO 3HUVSHFWLYH
 - ‡ %XGJHW)<
 - ‡ 2XU :D\)RUZDUG
- ‡ 4XHVWLRQV"

Higher Education &
Today's Environment

Standard & Poor's Outlook for Higher Education

‡3 UHGLFWLRQ RI D VKDOORZ UHFHVVLQR
‡7 KH 86 KLJKHU HGRUF D DVLFRQ HQHFRW OOPHQW SUHV
ODERU FKDOOHQJHV LQDELOLW\ WR UDLVH W
ULVLQJ FRVWV
‡2 SHUDWLQJ PDUJLQV ZLOO IDOO DV FRVWV LQF
DQG VFKRROV RIIHU PRUH WXLWLRQ DVVLVWDQ
‡\$ V SDQGHPLF IHGHUDO UHOLHI FRPHV WR DQ H
LQVWLWXWLRQV ZLOO IDFH UHYHQXH LQVWDEL

6RXUFH KZVZSKH UHGGLYH FRP QHZV VSDQLWV RZHVDOORR RNOIGHJJ MWLLQ VS ILQGV

Top 3 Challenges Over the Next 5-10 Years

5DQNLQJ E\ ILQDQFLDO OHDGHUV EDVHG RQ JUHD

6RXUFH 6\QWHOOLV† &)2 2XWORN IRU +LJKHU (GXFDLRQ

Increasing demands for return on investment from education

‡9DOXH DQG FRVW RI HGXFDWLRQ

‡6WXGHQW GHEW OHYHOV

‡*UDGXDWLRQ UDWHV DQG UHWHQWLRQ FKDOOHQJHV

‡ 0HQWDO +HDOWK LVVXH

‡ 6NLOOV *DS IRU VRPH VWXGHQWV

‡,QFUHDVHG DOWHUQDWLYH SRVW KLJK VFKRRO JUDGXDWLRQ

‡ *DS <HUV

‡ 6WUDLJKW WR -REV

‡ \$SSUHQWLFHVKLSV

‡(PSOR\PHQW HQYLURQPHQW SRVW JUDGXDWLRQ

‡6KRUWDJHV ±7HDFKHUV 1XUVHV DQG &RXQVHORUV JUDGXDW

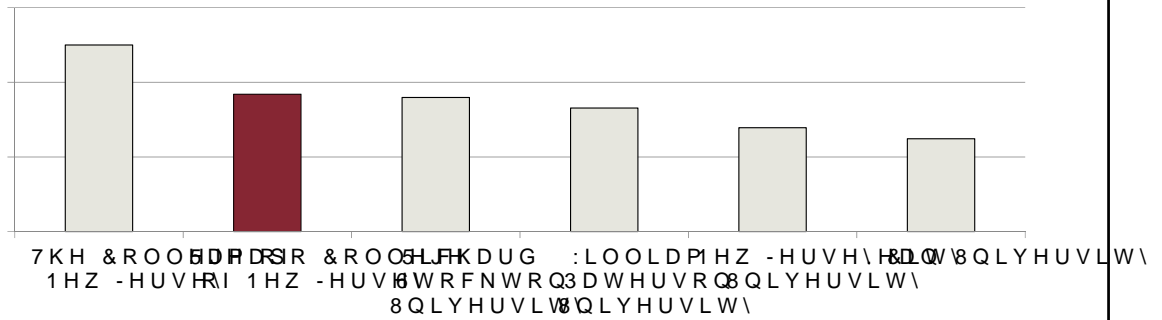
Future High School Graduates

Ramapo's State Appropriations

6RXUFH 0DUFK LQWHUQDO ILQDQFLDO VWDWHPHQWV

State Appropriations per Student FTE

Fall 2022 (FY23) In-State Tuition & Fees per Semester



6RXUFH ,QVWLWXWLRQ ZHEVLWHV

Net Migration of Students

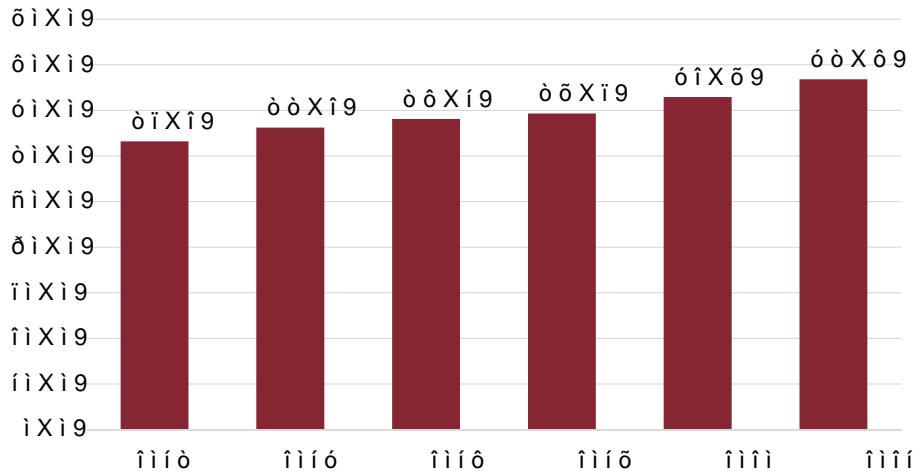
1HZ -HUVH\ 0LJUDWLR		
2XW RI 6WDWH		,QWR 6WDWH

1HW

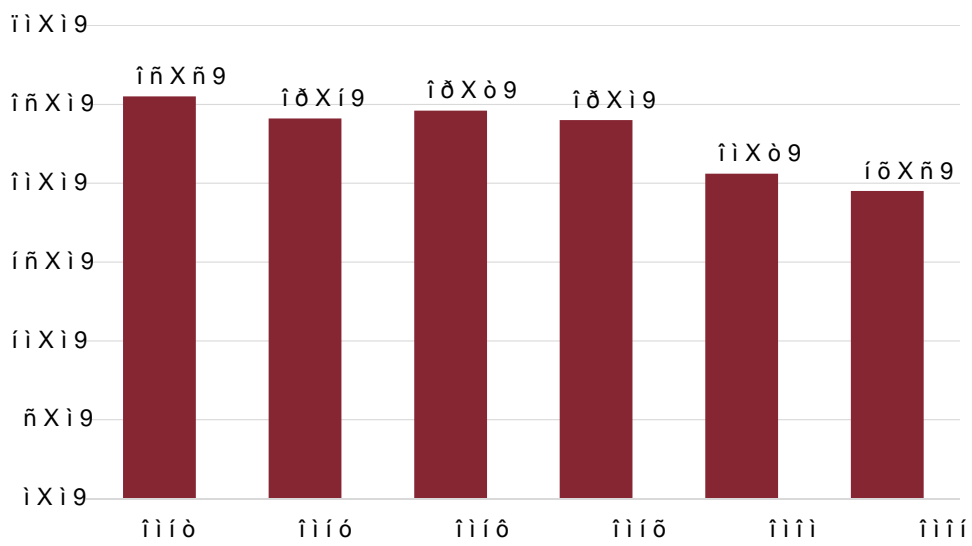
New Jersey is 2nd behind California (35,114) in total migration but is the national leader in the net migration.

6RXUFH 1DWLRQDO & HQWHU IRU (G)HEDJLRQ SURWDLQ EVVJLFFH VRWWSWDE@HV GW B DVS

Acceptance Rate among NJ 4-Year Public Colleges

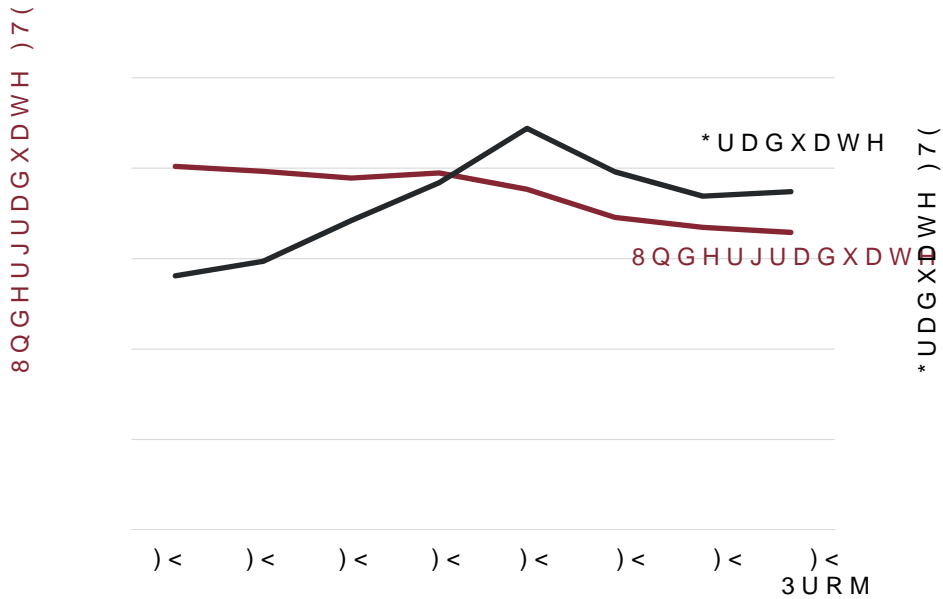


Yield Among NJ 4-Year Public Colleges



Ramapo College

Annualized Enrollment: FTE

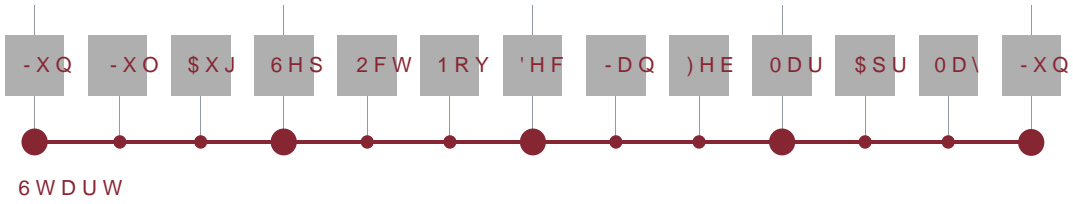


Housing

%RDUG RI
7UXVWHHV
%27
DSSURYHV
EXGJHW WXLWLRQ
URRP ERDUG
UDWHV

6XEPLW EXGJHW
UHTXHVV WR 1-
20%

%XGJHW & KDQJH
UHTXHVVV
VXEPLWWHG LQ
\$GDSWLYH



FY24 Budget Assumptions

‡ ([SHFWLQJ DQ LQFUHDVH IRU ERWK WJKUWLWRLQDDQG KRXVI
HYDOXDWLQJ LPSDFW

‡ 7XLWLRQ ZDLYHUV XS IDSPUR[LDFWHXOLQV *R[FOXG

‡ 8QGHUJUDGXDWH HQURROOPHCSWLQRJLV ERZHHWWHGDQ
)< DFWXDOV

‡ *UDGXDWH HQURCLOPEXQGHIRUHG< KLJRFW XDKDOV)<

‡ +RXVLQJ IRU)<)DOO DQG 6SULQJ LRFEXXSJHQFHGDW
FRPSDUHG WR)< ZKSLFKRKRIDGWD RFFXSDQF\ RI

FY24 Budget Assumptions

‡ 1R &29,' IXQGV LQ WJKLQXWJLPW DH[SMQVHV RU JUDQ

‡)XOO WLPH IULQJH UDVFXLEHXQWVWHSDMURP

‡ 'HOLEHUDWH SRVLWLRQ UHYLHZ DQG FRQWUROV

‡ 8QLRQ FRQWUDFWV HQGLQJ -XQH HDQHWXWFLQHGQFU

‡ \$QWLFLSDWHG XQLRQ DQFUDQBYHLQFOXGHG

Budget Development

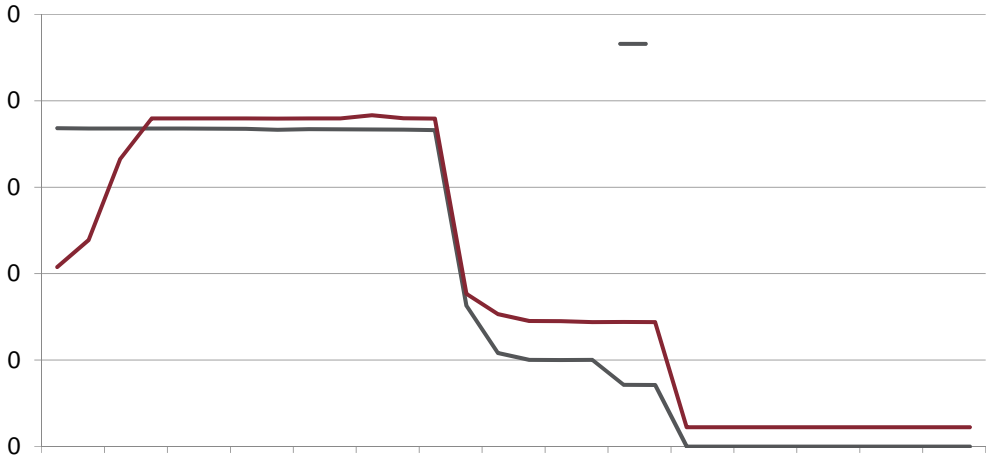


Expenditures by Category

FY24 Budget Estimate

'HEW 6HUY13UR IHVVLRQDO &RQWUDFWHGO XHO 8WL0LWLHV
2WKHU 6DODULHV %HQHILWV

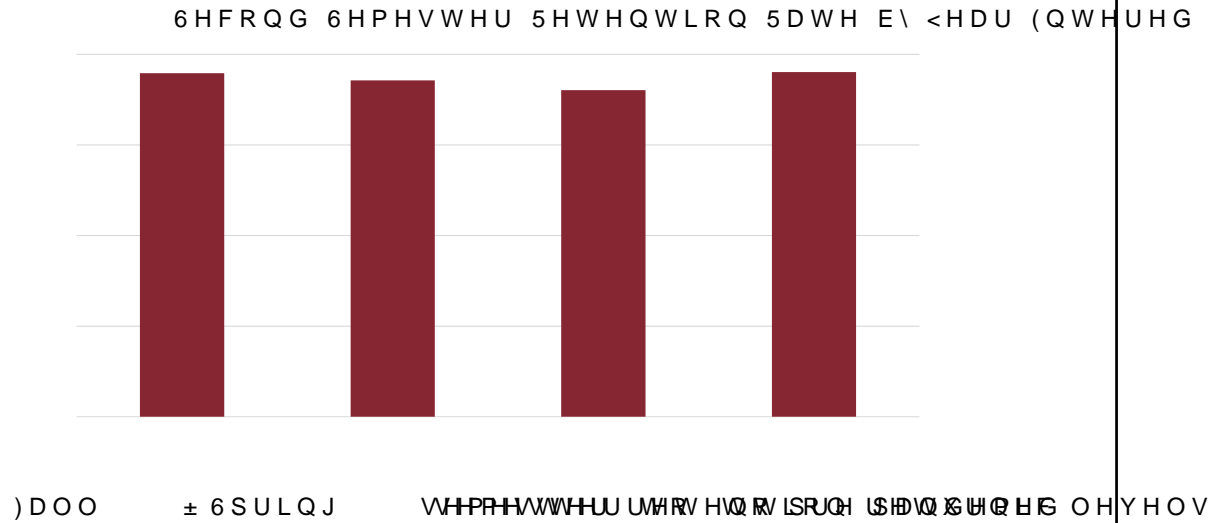
Ramapo's Debt Refinancing



All Hands On Deck

‡ Boldly Ascending 6WUDWHJLF 3ODQ
‡ &DPSXV)DFLOLWLHV 0DVWHU 3ODQ
‡ \$FDGHPLF 0DVWHU 3ODQ

Second Semester Retention



Priority Needs Proposals

3UHVLGHQWLDO 6FKRODUVKLSV	
(2) 6WXGHQW 6FKRODUVKLSV	
'LJLWDO +XPDQLWLHV 3URMHFWV	
(1+\$1&(7KHUDSHXWLF 6XSSRUW 3URJUDP	
)LUVW *HQHUDWLRQ 6WXGHQW &HQWHU	
*URVV &HQWHU IRU +RORFDXVW DQG *HQRFLQHSHWXGLQH	
%HUULH &HQWHU IRU 3HUIRUPHQJ DQG 9LVXEPHQW	
,QYHVWLJDWLYH *HQHWLF *HQHDORJ\ &HQWHU N SOHGJH IRU IROORZLQJ \HDUV	
&HQWHU IRU 'DWDOOD&RPHXPDWLF LRQDO 6FLHQFHV	

Questions?

Thank you!